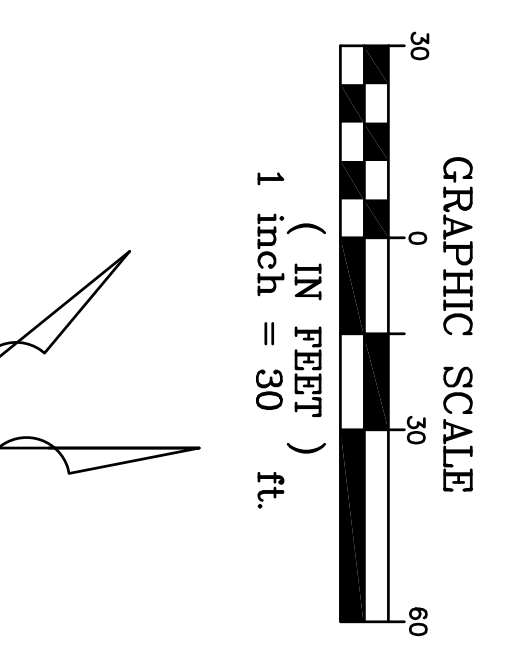
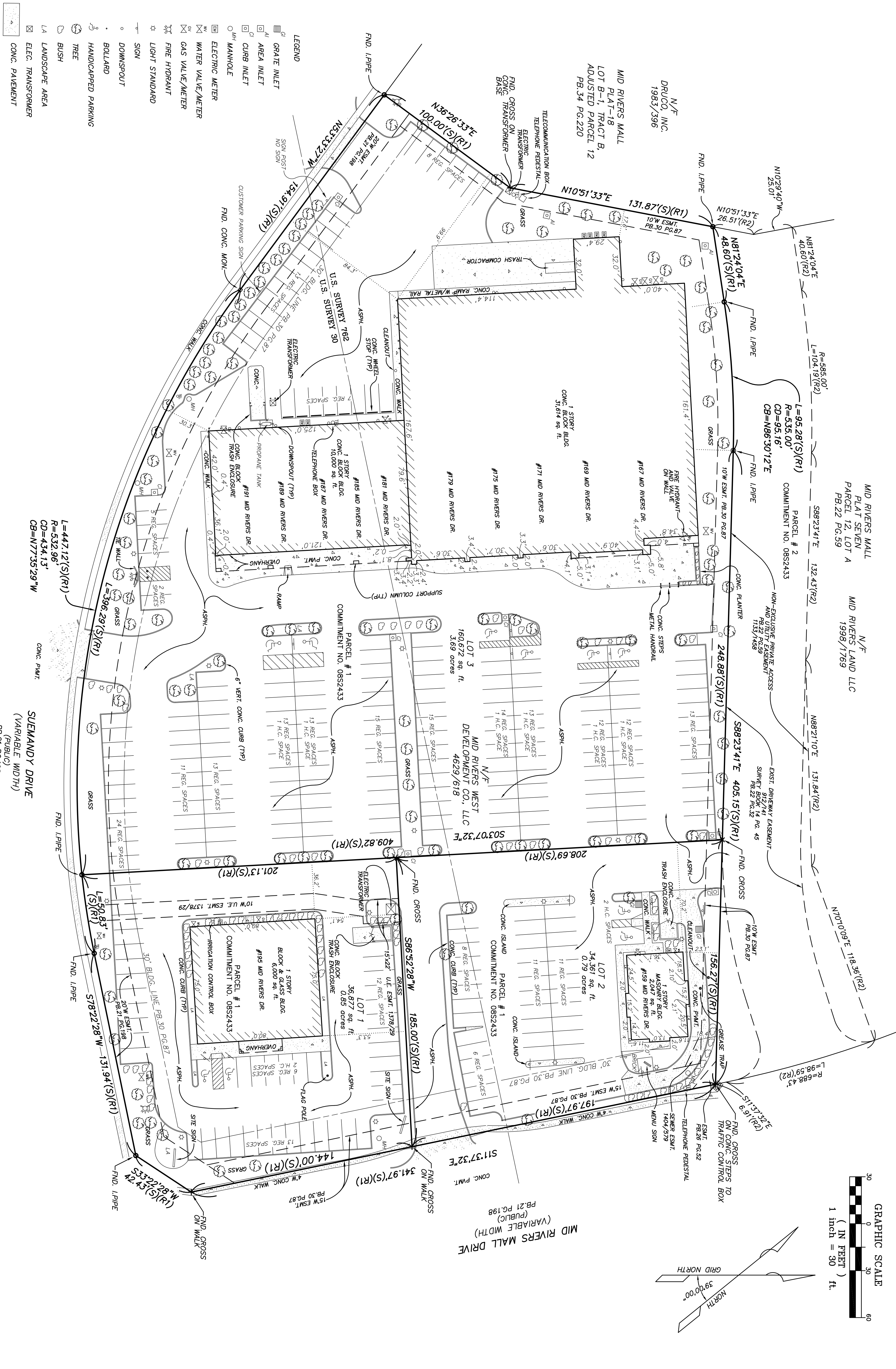


ALTA/ACSM LAND TITLE SURVEY

A TRACT OF LAND BEING LOTS 1, 2 AND 3 OF MID RIVERS MALL PLAT SEVENTEEN AS RECORDED IN PLAT BOOK 30 PAGE 87, BEING A RESUBDIVISION OF PART OF PARCEL 12 OF MID RIVERS MALL AS RECORDED ON PLAT BOOK 21, PAGES 198-199, OF THE ST. CHARLES COUNTY, RECORDERS OFFICE.



- LEGEND**
- AI GRAVE INLET
 - AI AREA INLET
 - CI CURB INLET
 - OH MANHOLE
 - EM ELECTRIC METER
 - WM WATER VALVE/METER
 - GM GAS VALVE/METER
 - FH FIRE HYDRANT
 - LS LIGHT STANDARD
 - SI SIGN
 - DS DOWNSPOUT
 - BOLLARD
 - HP HANDICAPPED PARKING
 - TREE
 - BUSH
 - LA LANDSCAPE AREA
 - ET ELEC. TRANSFORMER
 - CP CONC. PAVEMENT

SUEMANDY DRIVE
(VARIABLE WIDTH)
PB.21 PG.198

| NO. | DATE | DESCRIPTION |
|-----|----------|---------------------------------------|
| 1 | 08-21-08 | REVISED PER UP-DATED TITLE COMMITMENT |

| NO. | DATE | DESCRIPTION |
|-----|----------|---------------------------------------|
| 1 | 08-21-08 | REVISED PER UP-DATED TITLE COMMITMENT |

ALTA/ACSM LAND TITLE SURVEY
LOTS 1, 2 & 3
MID RIVERS MALL PLAT SEVENTEEN

Prepared For:
PROSPECT GROVE, LLC
C/O CADRE DEVELOPMENT, LLC

10560 OLD OLIVE, SUITE 500
ST. LOUIS, MO. 63141
(314) 997-4100

PICKETT, RAY & SILVER INC.

**CIVIL ENGINEERING, LAND SURVEYING,
AND NATURAL RESOURCES SERVICES**

| | | |
|--|---|---|
| <p>New Town 3320-1 Rue Royale St. Charles, MO 63301</p> | <p>St. Peters 333 Mid Rivers Mall Drive St. Peters, MO 63376</p> | <p>Branson 3027 W. Hwy 76, Suite B Branson, Mo 65616</p> |
|--|---|---|

Phone (636) 397-1211 Fax (636) 397-1104
www.prs3.com 1-800-708-3918